

# FOR LEASE

## Wubben Industrial Park Bldg. A

### 21,665 SF Warehouse/Office with up to 1.5 Acre Yard Area



11304 NE 66<sup>th</sup> Street • Vancouver, WA 98662

#### 21,655 SF Shell includes:

- 15,895 SF Warehouse
- 3,880 SF Office/ Open Area  
(2,880 SF Ground Floor Office  
and 1,000 SF 2<sup>nd</sup> Floor Office)
- 1,880 SF Mezzanine
- 2 dock doors
- 1 grade door
- 24' clear height
- Located just off NE 117<sup>th</sup> Avenue  
with easy access to SR-500 & I-205

#### Rates:

\$.45 PSF/Month + NNN on ground floor Warehouse & Mezzanine deck.

\$.75 PSF/Month surcharge on Office/Open Area & Mezzanine conference room.

\$.10 PSF/Month Yard area and overflow parking area

For more information contact:

**Dave Brown**  
**(360) 735-8001**

[www.ColumbiaCommercial.com](http://www.ColumbiaCommercial.com)

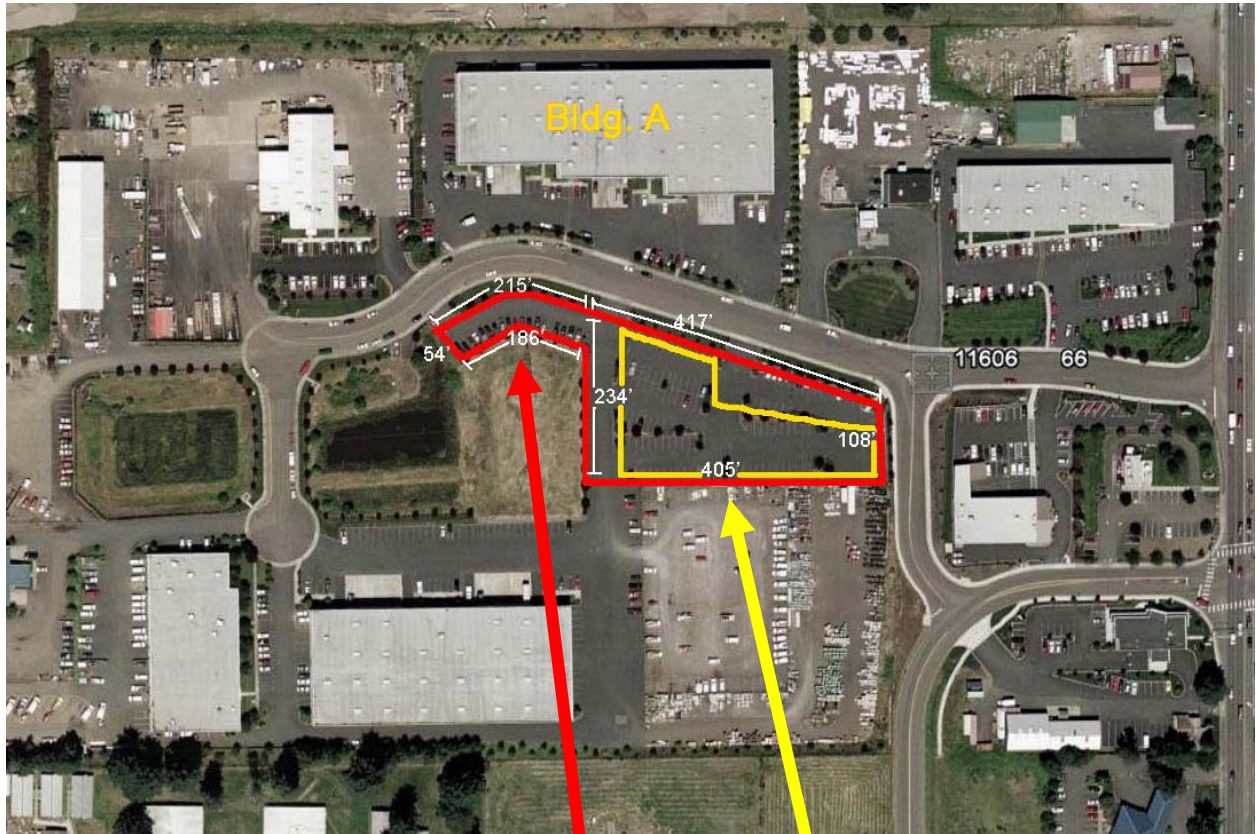
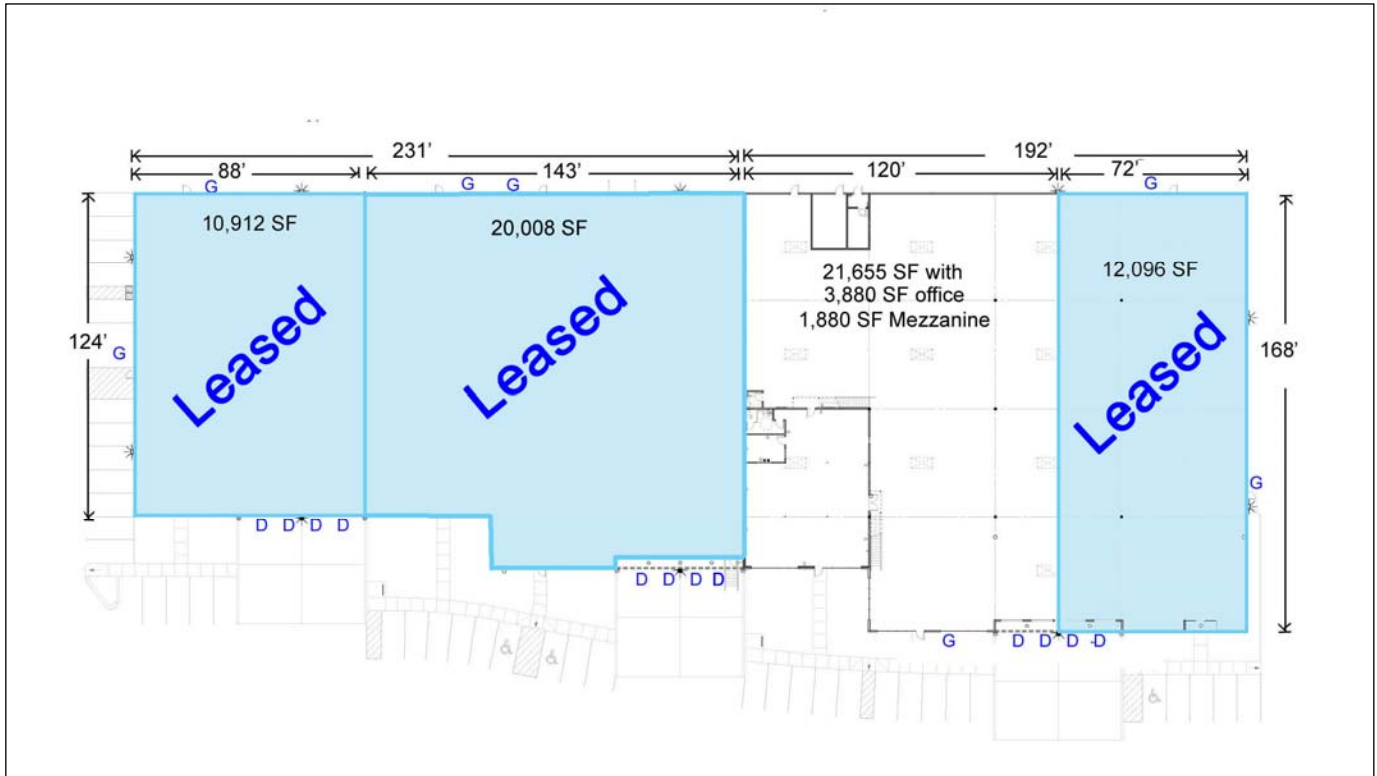
9120 NE Vancouver Mall Loop, Suite 200  
PO Box 820406  
Vancouver, Washington 98662  
PH: (360) 735-8001  
FX: (360) 735-8033



1672 Willamette Falls Dr., Suite E  
PO Box 46  
West Linn, Oregon 97068  
PH: (503) 650-5300  
FX: (503) 650-5343

**COLUMBIA COMMERCIAL PROPERTIES, LLC**  
[www.ColumbiaCommercial.com](http://www.ColumbiaCommercial.com)

The information contained herein has been obtained from sources we deem reliable. We do not, however, guarantee its accuracy. All information should be verified prior to purchase or lease.



Red outline is overflow parking area.

Yellow outline is yard area.